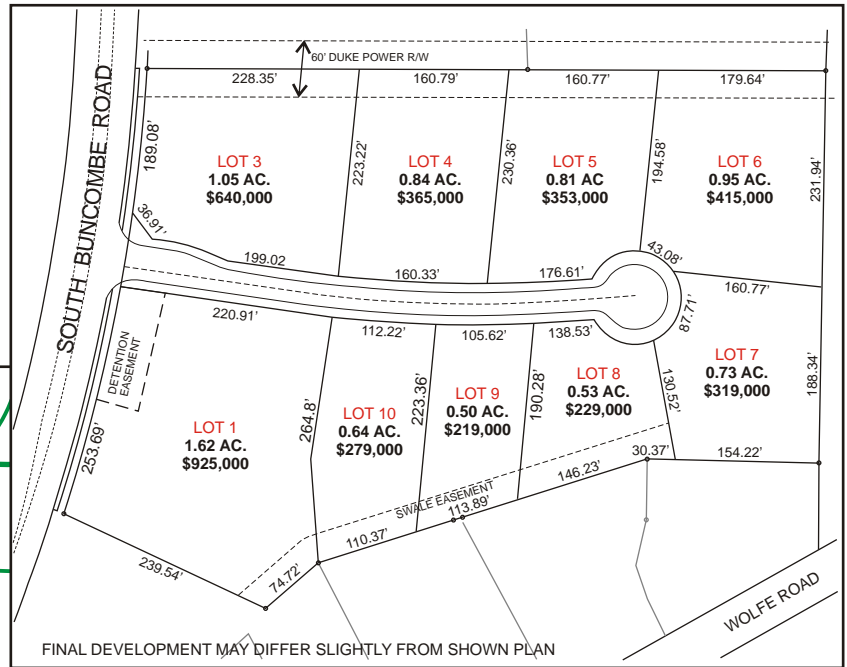


BUNCOMBE PLACE

SITES FROM
.5 TO 1.62 ACRES
IN SIZE

NEAR INTERSECTION
OF S. BUNCOMBE ROAD
AND BRUSHY CREEK ROAD
ALL UTILITIES IN PLACE



FINAL DEVELOPMENT MAY DIFFER SLIGHTLY FROM SHOWN PLAN

**ADJACENT TO NEW GREER MEMORIAL
HOSPITAL**

TAX MAP G005.00-02-002.13
ZONED GREER C2

**PRICED FROM
\$219,000 TO \$925,000**

DEVELOPED BY:



LANGSTON BLACK
REAL ESTATE, INC.

P.O. BOX 2167
GREER, S.C. 29652
BUS: 864-848-9070
FAX: 864-879-6696

50



SITE

FUTURE
AT
ARTHUR
STATE BANK



**PRAISE
CATHEDRAL**

**COTTAGES
AT BRUSHY
CREEK**

**PROPERTY OWNED BY GREENVILLE
HOSPITAL SYSTEM**

**GREER
MEMORIAL
HOSPITAL**

**BRUSHY
MEADOWS**

