

LANGSTON BLACK

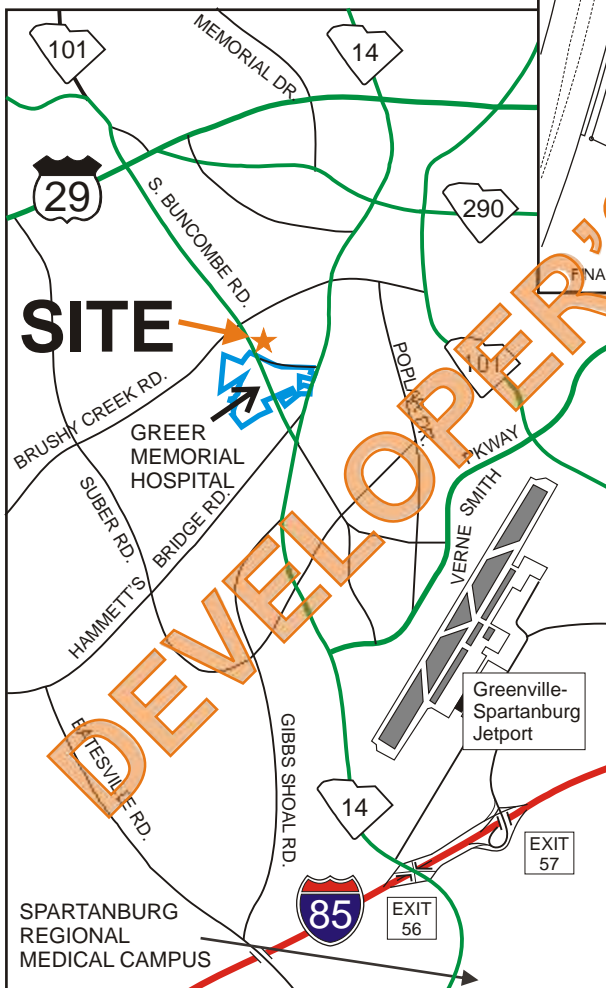
REAL ESTATE, INC.

MEDICAL OFFICE PARK SACRIFICE !

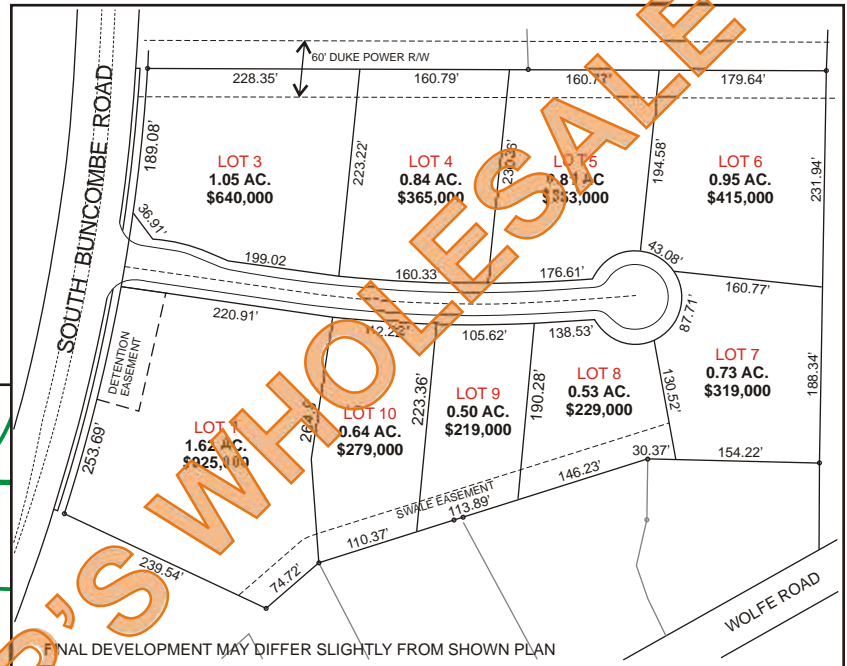
GREAT INVESTMENT OPPORTUNITY

INDIVIDUAL LOTS
VALUED AT
~~\$3,744,000~~
PACKAGE PRICED AT
\$2,425,000

**COMPLETELY DEVELOPED
READY TO BUILD**



BUNCOMBE PLACE



**ADJACENT TO NEW GREER
MEMORIAL HOSPITAL**

ALL UTILITIES ARE IN PLACE
TAX MAP G005.00-02-002.13
ZONED CITY OF GREER C2

**8.39+-
ACRES**

FOR MORE INFORMATION
CONTACT DAVID BLACK AT 230-7139
dblack@langston-black.com

DEVELOPED BY:



LANGSTON BLACK
REAL ESTATE, INC.

P.O. BOX 2167
GREER, S.C. 29652
BUS: 864-848-9070
FAX: 864-879-6696

50.1

www.langston-black.com

Every effort has been made to ensure the accuracy of the enclosed data, but we assume no responsibility for errors. All conditions and pricing subject to change without notice.
(LANGSTON-BLACK SITE #50.1)



SITE



COUNTY BANK SITE

PRAISE CATHEDRAL

COTTAGES AT BRUSHY CREEK

BRUSHY CREEK SUBDIVISION

GREER MEMORIAL HOSPITAL

PROPERTY OWNED BY GREENVILLE HOSPITAL SYSTEM



UNKNOWN