

LANGSTON BLACK

REAL ESTATE, INC.

GREAT FOR FAST FOOD OR RETAIL LAND FOR SALE

PRICE REDUCED!

**PARCEL A:
2.7+- ACRES**

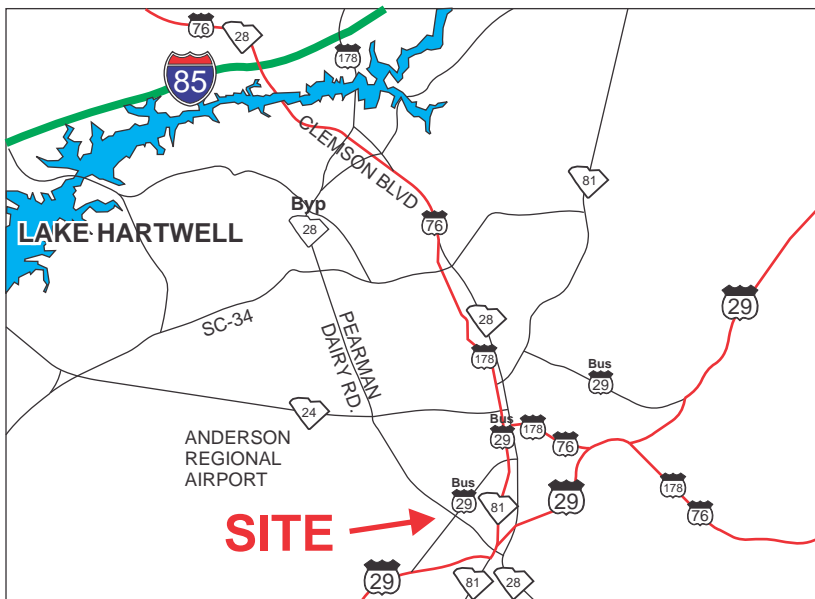
TAX MAP
125-00-01-014-000
\$160,000

**PARCEL B:
2.6+- ACRES**

TAX MAP
125-00-01-015-000
\$165,000

IF TRACT A & B
ARE PURCHASED
TOGETHER:
\$315,000

JUST OFF THE
INTERSECTION OF
PEARMAN DAIRY
RD. (HWY 28)
AND SAYRE
ST. (HWY 29).



ALL UTILITIES AVAILABLE
UNZONED IN ANDERSON
COUNTY

FOR MORE INFORMATION
CONTACT MARK GRIFFIN
AT 525-8562
mgriffin@langston-black.com

LANGSTON BLACK
REAL ESTATE, INC.

P.O. BOX 2167
GREER, S.C. 29652
BUS: 864-848-9070

042.1

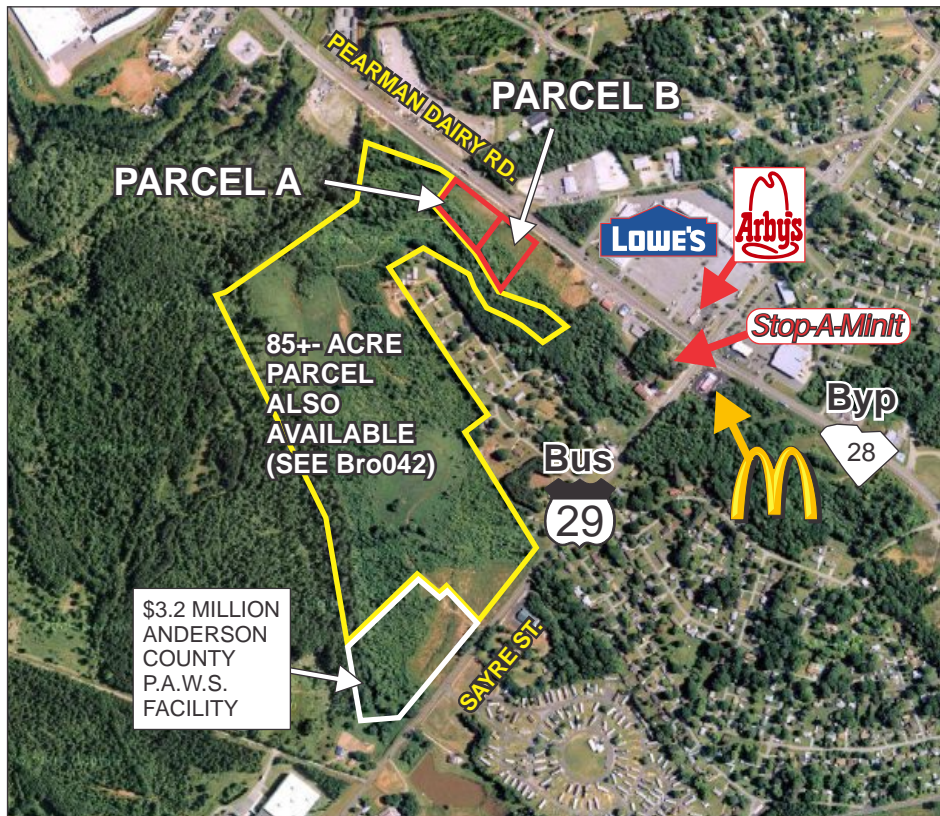
www.langston-black.com

Every effort has been made to ensure the accuracy of the enclosed data, but we assume no responsibility for errors. All conditions and pricing subject to change without notice.
(LANGSTON-BLACK SITE #042.1)



AVERAGE DAILY TRAFFIC COUNT (HWY 28 BYPASS): 22,300 VPD

DEMOGRAPHICS	1 MILE	3 MILES	5 MILES
2010 POPULATION	3,518	28,839	60,206
AVG. HH INCOME	\$25,743	\$29,474	\$39,226
TOTAL HOUSEHOLDS	1470	11801	24608
OWNER OCCUPIED HOUSING	49.60%	47.80%	55.10%



SHOWN PROPERTY LINES ARE ONLY ESTIMATED