

LANGSTON BLACK

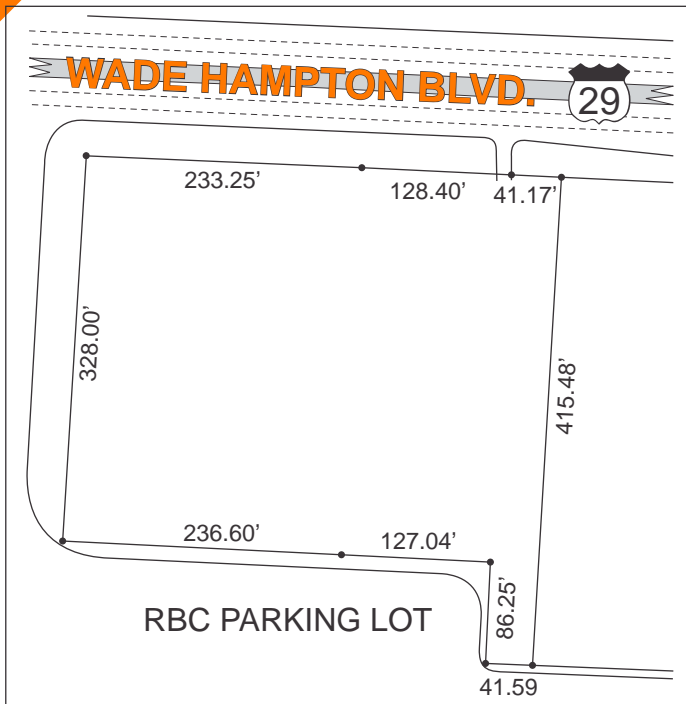
REAL ESTATE, INC.

LAND FOR SALE

WADE HAMPTON BLVD., GREENVILLE

CLOSE TO THE PLEASANTBURG DRIVE INTERSECTION

3.13+- ACRE PARCEL



400'+- FRONTAGE ON HWY 29
ZONED GREENVILLE COUNTY C2
PORTION OF TAX MAP 0276.00-02-001.04

ADJACENT TO RBC INSURANCE



2009 TRAFFIC COUNT: 32,300 VPD

\$1,100,000

FOR MORE INFORMATION
CONTACT CHUCK LANGSTON
AT 864-230-4302
clangston@langston-black.com

LANGSTON BLACK

REAL ESTATE, INC.

P.O. BOX 2167
GREER, S.C. 29652
BUS: 864-848-9070
FAX: 864-879-6696

006

www.langston-black.com

Every effort has been made to ensure the accuracy of the enclosed data, but we assume no responsibility for errors. All conditions and pricing subject to change without notice.
(LANGSTON-BLACK SITE #006)

